

1413
4

3/20/85
~~4-1985~~

V. Fangman found corner 0.5 west of
N-S fence, 78' South of fence to east, &
0.5 NW of a steel fence post.

RP: 8d nail in 30" Oak NE 138.92
8d nail in 24" Willow NW 65.67

185+92 FE LT
No Culv Inpl

Mytle Fu
Lyle R. E
W 1/2 S
Easemen
Not File

Est. Area Larry Peterson
11-19-16

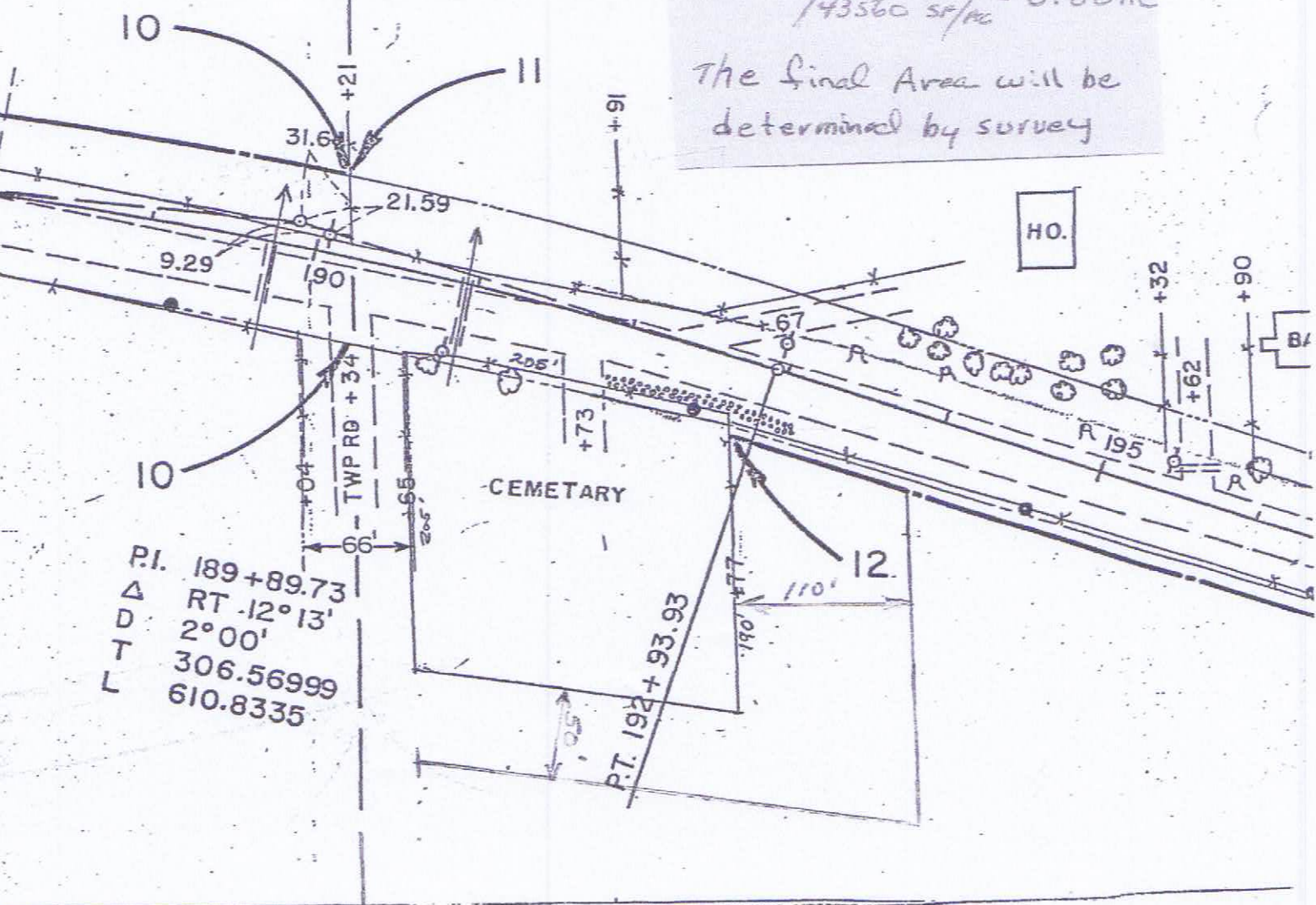
110' x 240' = 26400 SF

50' x 190' = 9500 SF

35900 SF

35900 / 43560 SF/ac = 0.82 AC

The final Area will be
determined by survey



P.I. 189+89.73
Δ RT -12°13'
D 2°00'
T 306.56999
L 610.8335